



Commentary Unit With Talkback And Dante Network Audio Interface



VITA
Network Audio Commentary Interface

Highlights

For Commentary
Or Talkback

Two Assignable
4 Wire Circuits

Dante & AES67
Compatible

Monitoring
With Left/Both/Right
Switching

Network
Remote Control &
Configuration

Power Via
PoE or
External DC

Overview

The VITA is a very powerful Dante network audio interface, in a compact belt pack style. It has a mic/line input and headphone monitoring connection for a single user, and contains two 4 wire circuits. One of these is typically used as an on air channel, and the other as a talkback channel.

The high quality microphone input, with the GlenSound Referee compressor, makes the Vita suitable for on air commentary use, particularly when pitch side.

The flexibility of the talk button configurations, means that the Vita can also be used as a talkback unit as part of a Dante network.

The VITA can connect to any Dante network, or to other audio equipment via GlenSound's own Dante interface units.





- Two Four Wire Circuits**

The VITA has two 4 wire circuits. These are typically used as main programme on air, with a separate talkback circuit. The push buttons for each circuit are configurable and can operate in different modes, to allow configuration for different types of uses:

 - Latching on/off
 - Momentary push to talk (PTT)
 - Intelligent mode where a short tap is latching, but a longer hold becomes momentary
 - Always on and mutes when pressed (cough)
 - Pressing one button, mutes the other circuit (talkback)

- Headphone Monitoring**

There is a 6.35mm jack socket for headphone monitoring. Each of the two 4 wire inputs can be selected to be in the left ear, right ear, or both ears of the headphones, depending on the user's preference. The level of each input can also be independently selected.

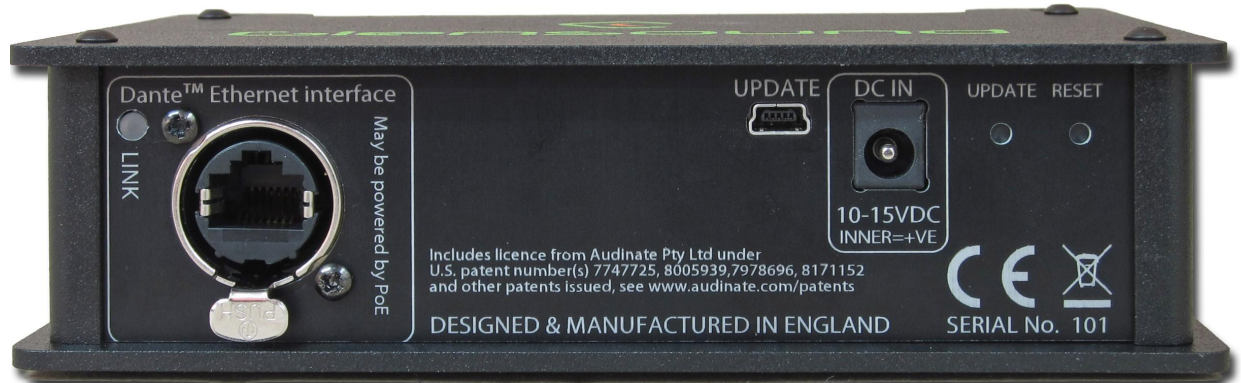
The headphone amplifier is intelligent and capable of driving correct levels into low or high impedance headphones and capable of connecting directly to both stereo or mono headphones and earpieces.

The headphone monitor also includes sidetone (at a programmable level) - sidetone is the commentator's own voice.

- Single Input**

The Vita is a single user unit, with one high quality input. The input is mic/mic+48v/line switchable, on a 3 pin XLR, with a variable gain control. As the Vita can be used for on air broadcast, Glensound's Referee compressor limiter is used to control the audio levels and prevent any clipping. The Referee compressor has been developed over many years of working with sports commentators, and provides a gently increasing compression as the input signal approaches clipping. In normal use the compressor is not active as it only starts working as clipping approaches, so normal dynamic range is maintained.





- Network Audio Link**

The VITA is Dante network audio compatible. The network connection is via a single Neutrik XLR RJ45. This link carries:

 - 2 audio inputs
 - 2 audio outputs
 - Power over Ethernet (PoE)

Audio connections across the network can be to:

 - Another VITA as a point to point 4W connection
 - An Express^{ip} Commentary Unit, an Inferno Commentary Unit or a GS-FW012 4 wire unit as part of a talkback setup.
 - An AoIP44, DARK88 or DARK 1616 audio input/output interface
 - Any other Dante compatible unit
- Power**

The Vita has two power sources. When connected to a PoE network switch or PoE midspan power supply. There is also an input for a 12 VDC connection.



- PPM Meters**

There are two 4 segment PPM meters on the VITA, showing -12 to +6. One is on the front panel, and the second is on the right side.

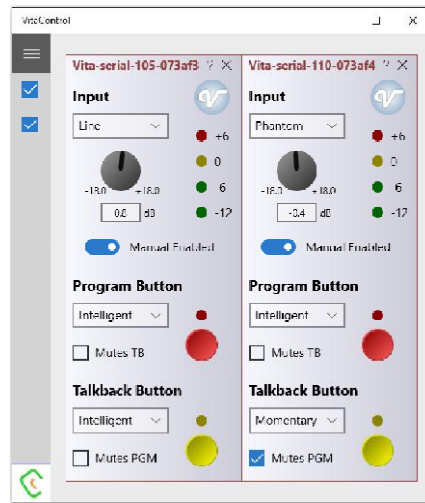
The second meter allows the user to check the level by glancing down when the VITA is being used attached on a belt clip.



VITA CONTROLLER

Network Remote Control & Configuration

Features

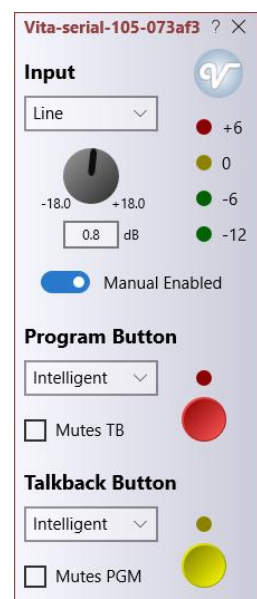


Vita Controller gives full remote control of mic on/off, gain levels and configuration of any Vita's connected across a network.

- Network Remote Control**
 Vita Controller is a Windows 10 PC application, and it can be downloaded for free from <http://www.glenSound.co.uk/product-details/vita/>. When launched, Vita Controller scans the network for all connected Vita's, which show up on the left hand side. The function of each Vita is replicated on Vita Controller, with each unit receiving its own visual controller module.
- Remote Control Of Mic Gain Levels**
 There are settings to select mic, mic +48v, or line inputs. A rotary control then acts as the gain level up and down. This all operates in real time.
- Talk Button Configuration**
 Directly clicking on the program or talkback button on Vita Controller will work in the same way as if it was pressed locally on the Vita itself. This allows an engineer to have remote control of the mic on/off function. Each button can be set independently in the following modes:
 - Momentary - button is active only when held
 - Latching - a single press locks the button on or off
 - Intelligent - a short press locks the button, where a longer press acts as momentary
 - Cough
 - Always ON
 - Always OFF

The operation of a button can also mute the other circuit. For example, this is used to mute the program mic when the talkback button is pressed.

- Local Control Security**
 Vita Controller can disable the local controls on the unit. This gives security to the engineer using Vita Controller that they have full control of all levels and operation and can not be over ridden. If the local controls are not disabled, and adjustment on the local unit will over ride the remote setting.



common interface



Dante Controller

Route Audio & Configure Devices On A Dante Network

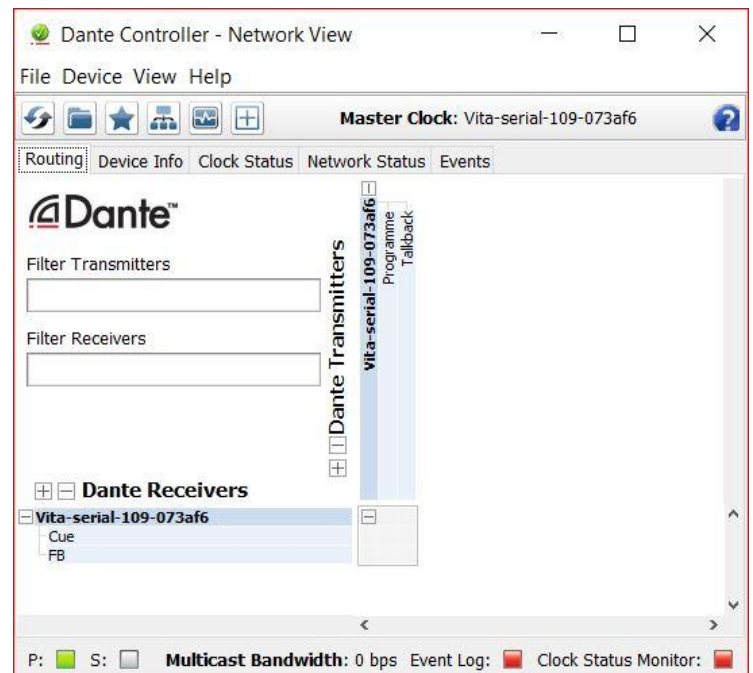
Overview

Dante Controller

Dante Controller is a free software application that enables you to route audio and configure devices on a Dante network. With automatic device discovery, one-click signal routing and user-editable device and channel labels, setting up a Dante network couldn't be easier. See the overview for more detail on Dante audio networking.

Dante Controller is much more than just a configuration and routing matrix. Dante Controller provides essential device status information and powerful real-time network monitoring, including device-level latency and clock stability stats, multicast bandwidth usage, and customized event logging, enabling you to quickly identify and resolve any potential network issues. You can also quickly and easily backup, restore, move, and reuse Dante network configurations using Presets, and edit Dante routing configurations offline.

Dante Controller is available for Windows and Mac OS X.



Features

- View all Dante-enabled audio devices and their channels on the network
- View and edit device clock and network settings
- Route audio between devices, and view the state of existing audio routes
- Rename devices and channels using your own friendly names
- Customize the receive latency (latency before playout)
- Save and reapply audio routing presets
- Edit presets offline, and apply as configurations for new network deployments
- Change sample rates and clock settings
- View multicast bandwidth across the network
- View transmit and receive bandwidth for each device
- View device performance information, including latency stats, clock stability stats and packet errors
- View comprehensive, configurable event logs



DANTE The DANTE Audio Network Overview

Overview

Based on industry standards, Dante is an uncompressed, multi-channel digital media networking technology, with near-zero latency and synchronization. Dante is the preferred audio networking solution that has been adopted by more manufacturers than any other networking technology. Interoperability is not a dream of the future, but a reality today. Hundreds of Dante-enabled products are available from the world's leading manufacturers, enabling you to mix devices from multiple manufacturers.

Economical and Versatile

One cable does it all. Dante does away with heavy, expensive analogue or multicore cabling, replacing it with low-cost, easily-available CAT5e, CAT6, or fibre optic cable for a simple, lightweight, and economical solution. Dante integrates media and control for your entire system over a single, standard IP network.

Dante systems can easily scale from a simple pairing of a console to a computer, to large capacity networks running thousands of audio channels. Because Dante uses logical routes instead of physical point-to-point connections, the network can be expanded and reconfigured at any time with just a few mouse clicks.

Outstanding Quality

Since audio is transmitted digitally, you don't have to worry about the common analogue challenges of interference from other electrical equipment, crosstalk between cables, or signal degradation over long cable runs.

Easy To Install

Setting up Dante networks couldn't be easier. You no longer have to shudder when considering the deployment of an audio network. Even the most complex networks can be set up and configured quickly and easily with Dante, making system integration simple. Dante automatically handles the technical complexities for you.

Signal routing and system configuration with Dante is fast, simple, and incredibly flexible. Dante Controller is a powerful software application that manages devices on the network. Setting up a Dante network is typically just a matter of plugging devices into an Ethernet switch and connecting a computer to the network. All Dante devices are automatically discovered and displayed in Dante Controller, so you can be up and running in seconds. channels; multicast sends an audio stream to multiple devices simultaneously.



**DANTE****The DANTE Audio Network Overview****Overview (cont...)****Easy to Use**

With Dante Controller you can easily edit device names and channel labels, control sample rates, and set device latencies. There is no longer any need to remember device IDs or channel numbers. Instead, a single audio channel is referred to just like an email address: "commentatorA @ studio or "news_mic @ voboothA". Set it and forget it. Once the network is configured, the computer running Dante Controller can be removed from the network, and reconnected only if changes are required or system monitoring is desired. Signal routing and other system settings are stored safely in the Dante devices themselves, so they are automatically restored if a device is power-cycled.

Network Health and Management

Real-time information about the health of your network is essential for a proper understanding of its performance. There are a rich suite of diagnostic tools within Dante Controller, providing visibility into the network health status through features such as device latency monitoring, active clock health monitoring, packet error reporting, and bandwidth usage statistics.

Glitch-Free Redundancy

Many Dante-enabled devices support 'glitch-free' redundancy, enabling a secondary physical network to be provided, duplicating the audio traffic on the primary network. This automatically prevents any audio loss or interruption in the event of a connectivity problem on the primary network.

Unicast or Multicast

Dante audio channels can be configured as unicast or multicast as appropriate, to make best use of available bandwidth. Unicast provides a direct point-to-point stream for unique channels; multicast sends an audio stream to multiple devices simultaneously.

Fully Integrated with Windows and Mac OS X

With Dante Virtual Soundcard, your computer becomes a Dante audio interface for multitrack recording and media playback, using the computer's existing Ethernet port — no additional hardware is required. Digital Audio Workstations, software-based media players, Skype, iTunes, Pandora, Spotify and other applications are easily integrated into your network via Dante Virtual Soundcard.



6 Brooks Place, Maidstone, Kent, ME14 1HE, UK
Tel: **+44 (0)1622 753662**
Email: **sales@glensound.co.uk**